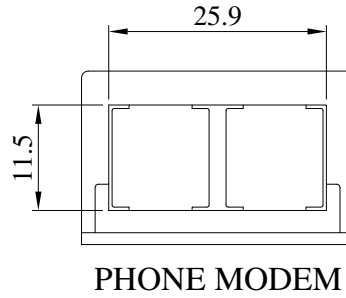
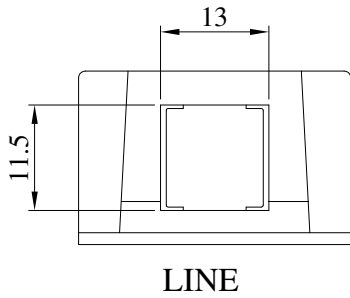


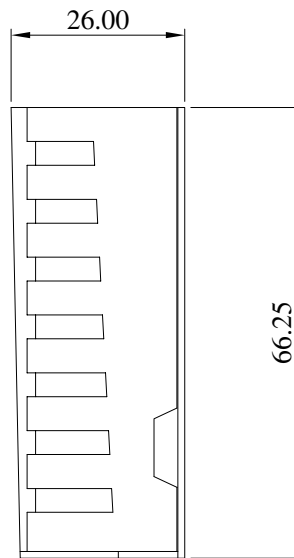
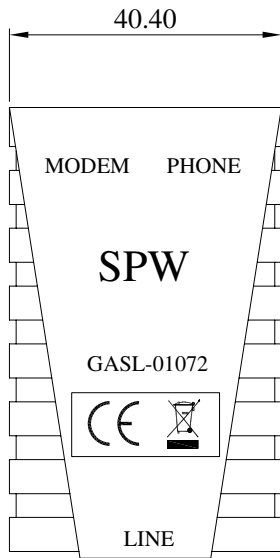
# SPECIFICATION FOR APPROVAL

Product Name	ADSL SPLITTER	Page	1
Tai-Tech Part No.	GASL-01072		

## 1. CONFIGURATION & DIMENSIONS : (UNIT : mm)



LINE : RJ11  
MODEM : RJ11  
PHONE : RJ11



ALL TOLERANCE :  $\pm 0.25\text{mm}$

NOTE : Specifications subject to change without notice. Please check our website for latest information.



RoHS Compliant

27.03.2007

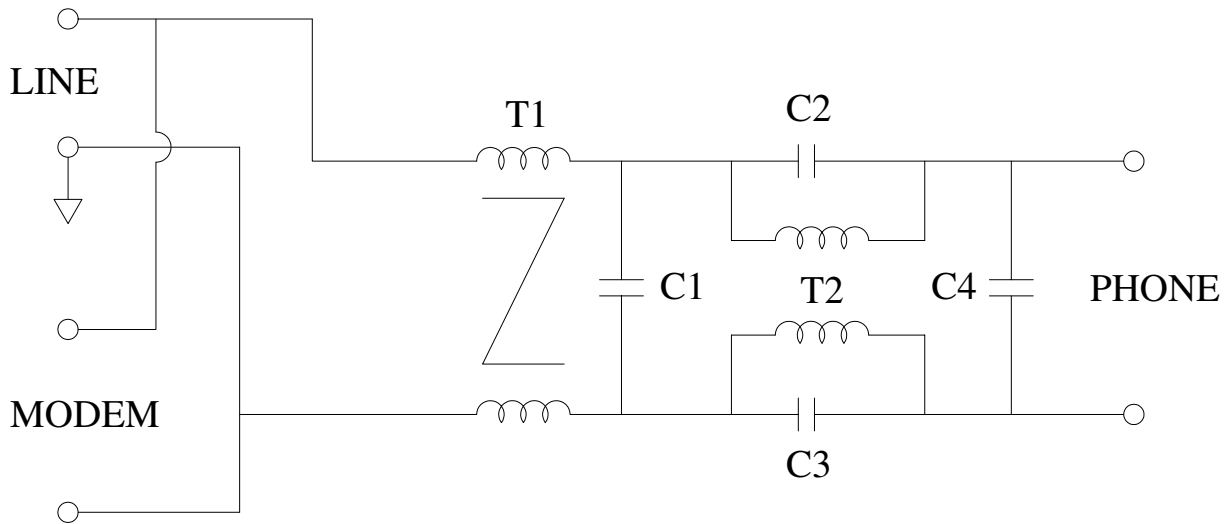


TAI-TECH ADVANCED ELECTRONICS (S) PTE LTD

# SPECIFICATION FOR APPROVAL

Product Name	ADSL SPLITTER	Page	2
Tai-Tech Part No.	GASL-01072		

## 2. SCHEMATIC :



RoHS Compliant

NOTE : Specifications subject to change without notice. Please check our website for latest information.

27.03.2007



TAI-TECH ADVANCED ELECTRONICS (S) PTE LTD

# SPECIFICATION FOR APPROVAL

Product Name	ADSL SPLITTER	Page	3
Tai-Tech Part No.	GASL-01072		

### 3. ELECTRICAL CHARACTERISTICS :

ITEM	PARAMETER	SYMBOLS AND CONDITIONS	RESULT OF RANGE	TEST INSTRUMENTS
1.	DCR (5,4,1)	LINE AT 1. PHONE SHORT 2. PHONE OPEN	25Ω MAX. 5MΩ MIN.	FLUKE 8050
2.	RETURN LOSS (5,4,2)	LINE AT PHONE INTO 600Ω LOAD (ZT1) 1. 300Hz  2. 500Hz & 2KHz  3. 3.4KHz	$RL=20\log \left  \frac{Z+600}{Z-600} \right $  RL=14dB MIN. Z=401 - 899Ω RL=18dB MIN. Z=466 - 772Ω RL=14dB MIN. Z=401 - 899Ω	ANRITSU MS4603A
3.	LONGITUDINAL BALANCE (5,4,3)	PHONE AT PHONE INTO 600Ω LOAD (ZT1) 1. 200Hz - 1KHz 2. 3KHz	INPUT LINE GROUND  58dB MIN. 53dB MIN.	GW GAG-808A GVT-427
4.	FREQUENCY RESPONSE LOSS (5,4,4)	PHONE AT PHONE INTO 600Ω LOAD (ZT1) 1. 1.020KHz REF. 10dBm (0.245V) 300-304KHz	±1dB	GW GAG-808A GVT-427
5.	DELAY DISTORTION (5,4,5)	PHONE AT PHONE INTO 600Ω LOAD (ZT1) -10dBm REF. (0.245V) 600-3.2KHz	200mS MAX.	ANRITSU MS 4063.A



**RoHS Compliant**

*NOTE : Specifications subject to change without notice. Please check our website for latest information.*

27.03.2007



**TAI-TECH ADVANCED ELECTRONICS (S) PTE LTD**

# SPECIFICATION FOR APPROVAL

Product Name	ADSL SPLITTER	Page	4
Tai-Tech Part No.	GASL-01072		

### 3. ELECTRICAL CHARACTERISTICS :

ITEM	PARAMETER	SYMBOLS AND CONDITIONS	RESULT OF RANGE	TEST INSTRUMENTS
6.	INSERTION LOSS (5,4,6)	PHONE AT PHONE INTO 600Ω LOAD (ZT1) -10dBm REF. (0.245V) 1020Hz	$IL = \left  10 \log \frac{P_o}{P_i} \right $ 1dB MAX.	GW GAG-808A GVT-427
7.	ADSL BAND ATTENUATION	PHONE AT PHONE INTO 600Ω LOAD (ZT1) 1. 30KHz-300KHz 2. 300KHz-1.104MHz 3. REF -dBm (0.245V)	65dB MIN. 55dB MIN.	GW GAG-808A GVT-427



**RoHS Compliant**

*NOTE : Specifications subject to change without notice. Please check our website for latest information.*

27.03.2007



**TAI-TECH ADVANCED ELECTRONICS (S) PTE LTD**