

SPECIFICATION FOR APPROVAL

Product Name	INTEGRATED MODULAR JACK (LEAD FREE)	Page	1
Tai-Tech Part No.	10/100/1000 GIGABIT ETHERNET RJ45 DUAL USB A COMBO	Rev. No.	0

Meets IEEE 802.3 specification
 LAN interface suitable for 10/100/1000 Base-TX applications
 350 uH minimum OCL with 8mA bias current
 USB module complies with USB 2.0 standards
 RJ45 connection meets CAT3, 5e and 6 Fast Ethernet
 Available with or without LEDs
 Minimum 1500Vrms isolation per IEEE802.3 requirement
 Operating temperature 0°C to +70°C
 Storage temperature -40°C to +85°C

Patent No.:

Taiwan - M243821, file94221170,
 China - ZL03252694.6
 U.S.A. - 6,811,442 B1
 Japan - 31188754
 Germany - 20 2005 016 971.4

TRANSFORMER ELECTRICAL SPECIFICATIONS AT 25°C

Part Number	Data Rate	Turns Ratio	LEDs (L/R)	Insertion Loss (dB max.)	Return Loss 100Ω±15Ω (dB min.)			Cross talk (dB min.)			C.M.R. (dB min.)		Hi - pot (Vrms)
		TX / RX			1-125 MHz	1-30 MHz	30-60 MHz	60-80 MHz	1-30 MHz	30-60 MHz	60-100 MHz	1-60 MHz	
G27US-310339A	10/100/1000	1CT:1	GO / Y	-1.2	-18	-16	-12	-40	-35	-30	-40	-30	1500
G27UX-21026EA	10/100/1000	1CT:1	G / GY	-1.2	-18	-16	-12	-40	-35	-30	-40	-30	1500

NOTES : 1. LEDs Left / Right G=green, Y=yellow, O=orange
 2. C.M.R. = Common Mode Rejection

MATERIAL SPECIFICATION

Metal Shell : Copper Alloy , Finish: 50u" Nickel
 Back Cover : Copper Alloy , Finish: 50u" Nickel
 Housing : Thermoplastic , UL 94V-0, Color Black
 Bottom Base : Nylon PA46, UL 94V-0, Color Black
 Terminal / Copper Alloy t=0.40x0.50mm Thickness
 100u" Tin-Lead on Solder, Both over 50u" Nickel Under-Plated
 Insert : Thermoplastic , UL 94V-0, Color Black
 Terminal / Phosphor Bronze
 15u" Gold on Contact Area, 100u" Tin on Solder, Both over 50u" Nickel Under-Plated
 Coil Base : Phenolic , UL 94V-0, Color Black



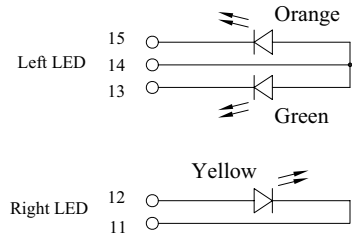
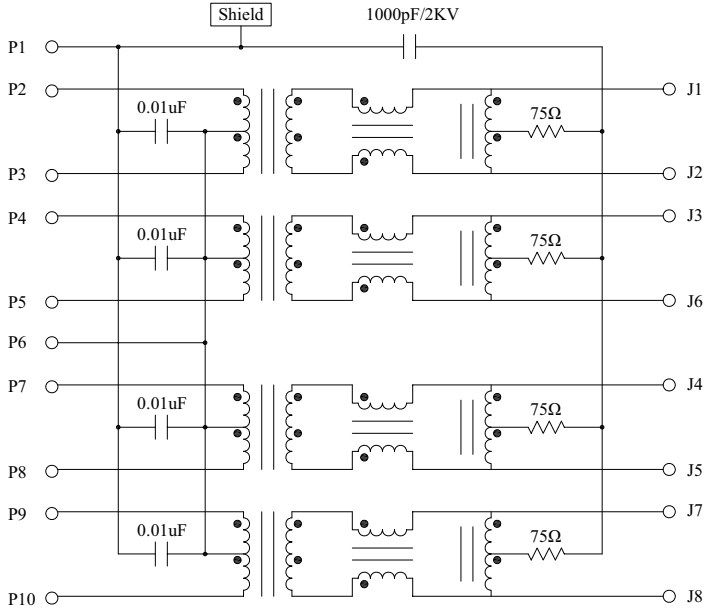
RoHS Compliant



SPECIFICATION FOR APPROVAL

Product Name	INTEGRATED MODULAR JACK (LEAD FREE)	Page	3
Tai-Tech Part No.	10/100/1000 GIGABIT ETHERNET RJ45 DUAL USB A COMBO	Rev. No.	0

SCHMATIC



LED CONFIGURATION

Standard LED	Wavelength(λ)	V / IF=20mA	
		max.	typ.
Yellow	585nm	2.5 V	2.1 V
Green	570nm	2.5 V	2.1 V
Orange	605nm	2.5 V	2.1 V



RoHS Compliant

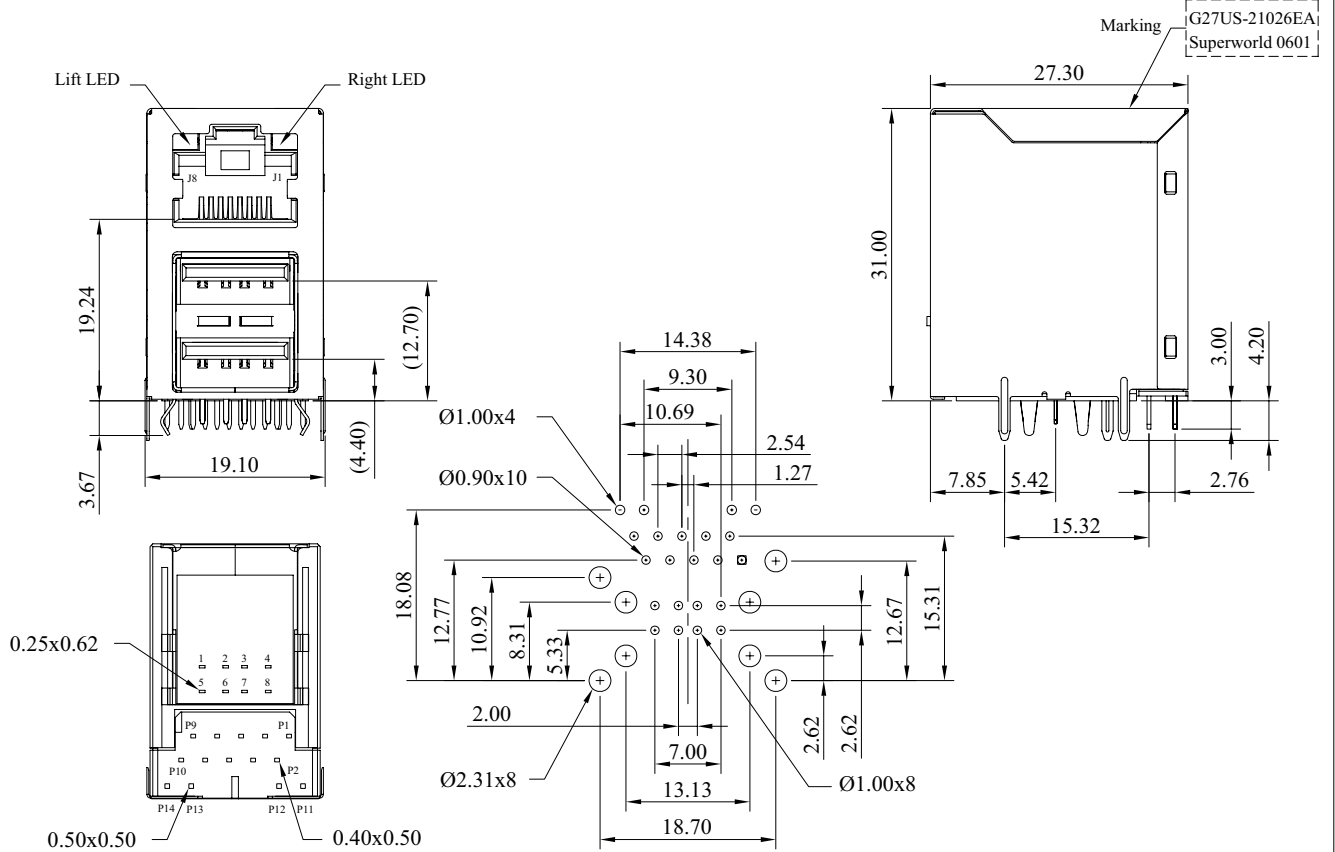


TAI-TECH ADVANCED ELECTRONICS (S) PTE LTD

SPECIFICATION FOR APPROVAL

Product Name	INTEGRATED MODULAR JACK (LEAD FREE)	Page	4
Tai-Tech Part No.	10/100/1000 GIGABIT ETHERNET RJ45 DUAL USB A COMBO	Rev. No.	0

MECHANICAL : G27UX-21026EA



Suggested PCB Pad Layout
Component Side View

- NOTES : 1. Tolerance : PCB $\pm 0.05\text{mm}$
Connector $\pm 0.25\text{mm}$
2. Connector dimensions comply with FCC 68.5 dimension requirements



RoHS Compliant

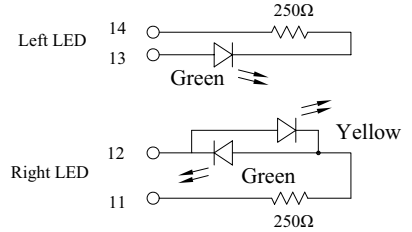
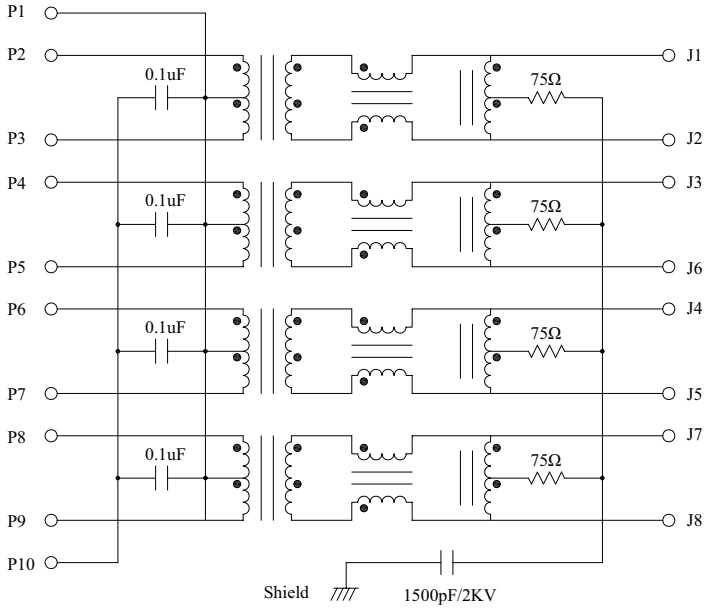


TAI-TECH ADVANCED ELECTRONICS (S) PTE LTD

SPECIFICATION FOR APPROVAL

Product Name	INTEGRATED MODULAR JACK (LEAD FREE)	Page	5
Tai-Tech Part No.	10/100/1000 GIGABIT ETHERNET RJ45 DUAL USB A COMBO	Rev. No.	0

SCHEMATIC



LED CONFIGURATION

Standard LED	Wavelength(λ)	V / IF=20mA	
		max.	typ.
Yellow	585nm	2.5 V	2.1 V
Green	570nm	2.5 V	2.1 V
Orange	605nm	2.5 V	2.1 V



RoHS Compliant



TAI-TECH ADVANCED ELECTRONICS (S) PTE LTD