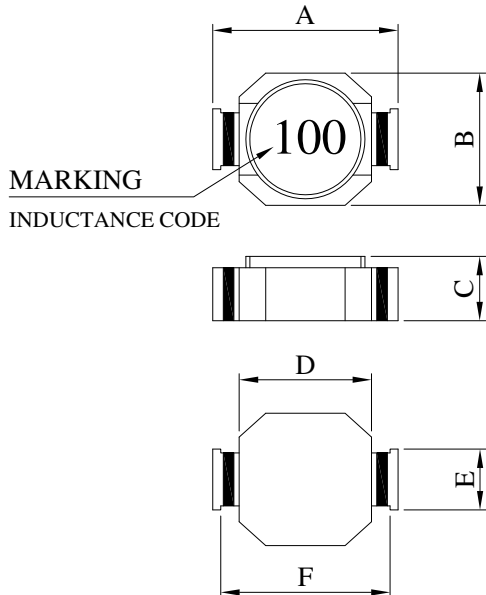


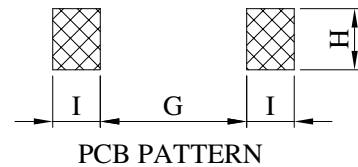
SPECIFICATION FOR APPROVAL

Product Name	SMD POWER INDUCTORS (LEAD FREE)	Page	1
Tai-Tech Part No.	SWDH1608 SERIES		

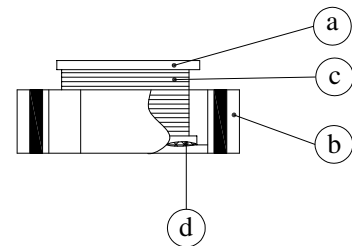
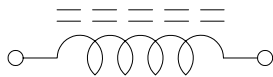
1. CONFIGURATION & DIMENSIONS :



A :	7.00±0.3	m/m
B :	5.20±0.3	m/m
C :	2.92 MAX.	m/m
D :	5.00±0.3	m/m
E :	2.00±0.2	m/m
F :	6.40±0.3	m/m
G :	4.00 REF.	m/m
H :	2.50 REF.	m/m
I :	1.60 REF.	m/m



2. SCHEMATIC DIAGRAM :



3. MATERIALS :

NO.	DESCRIPTION	SPECIFICATION	REMARK
a.	CORE	DR FERRITE CORE	
b.	BASE	PHENOLIC	
c.	WIRE	ENAMELLED COPPER WIRE	
d.	ADHESIVE	EPOXY	



RoHS Compliant

NOTE : Specifications subject to change without notice. Please check our website for latest information.

05.01.2007



TAI-TECH ADVANCED ELECTRONICS (S) PTE LTD

SPECIFICATION FOR APPROVAL

Product Name	SMD POWER INDUCTORS (LEAD FREE)	Page	2
Tai-Tech Part No.	SWDH1608 SERIES		

4. GENERAL SPECIFICATION :

- a. TEMP. RISE : 40°C TYP. AT IDC
- b. RATED CURRENT : $\Delta L / L0A=10\%$ MAX. AT IDC
- c. OPERATING TEMP. : -25°C ----- +85°C
- d. RESISTANCE TO SOLDER HEAT : 260°C. 10 SECS.

5. ELECTRICAL CHARACTERISTICS :

PART NO.	INDUCTANCE (μ H)	TEST FREQ. (Hz)	SRF (MHz) TYP.	RDC (mOHM) MAX	IDC (A)
SWDH1608-1R0MF	1.0 \pm 20%	0.1V / 100K	180.0	40.0	2.90
SWDH1608-1R5MF	1.5 \pm 20%	0.1V / 100K	130.0	45.0	2.50
SWDH1608-2R2MF	2.2 \pm 20%	0.1V / 100K	100.0	55.0	2.00
SWDH1608-3R3MF	3.3 \pm 20%	0.1V / 100K	80.0	65.0	1.70
SWDH1608-4R7MF	4.7 \pm 20%	0.1V / 100K	60.0	90.0	1.50
SWDH1608-6R8MF	6.8 \pm 20%	0.1V / 100K	50.0	100.0	1.20
SWDH1608-100MF	10.0 \pm 20%	0.1V / 100K	40.0	160.0	1.10



RoHS Compliant

NOTE : Specifications subject to change without notice. Please check our website for latest information.

05.01.2007



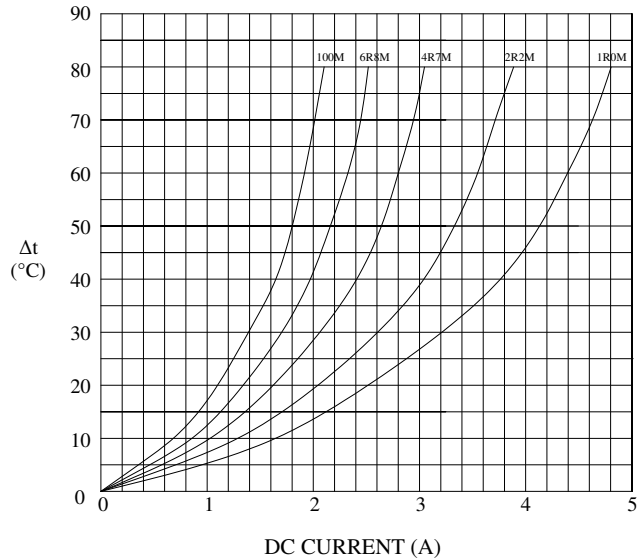
TAI-TECH ADVANCED ELECTRONICS (S) PTE LTD

SPECIFICATION FOR APPROVAL

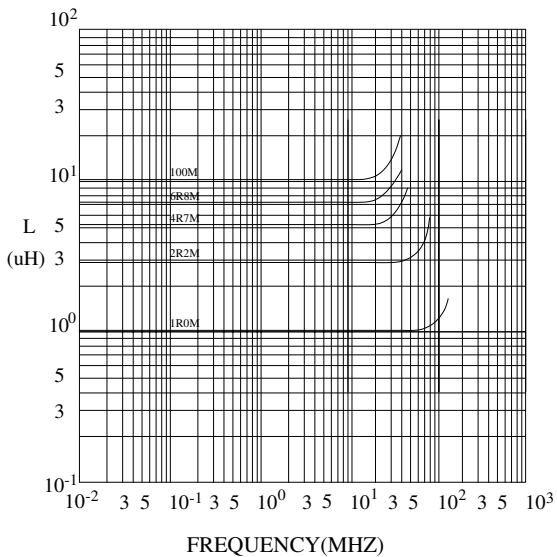
Product Name	SMD POWER INDUCTORS (LEAD FREE)	Page	3
Tai-Tech Part No.	SWDH1608 SERIES		

6. CHARACTERISTICS CURVES :

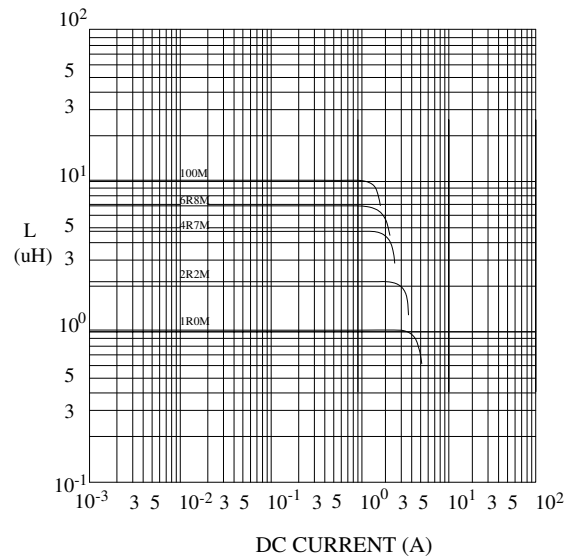
@ TEMP. RISE VS. DC SUPERPOSITION RESPONSE CURVE



@ INDUCTANCE VS. FREQUENCY RESPONSE CURVE



@ INDUCTANCE VS. DC SUPERPOSITION RESPONSE CURVE



NOTE : Specifications subject to change without notice. Please check our website for latest information.



RoHS Compliant

05.01.2007



TAI-TECH ADVANCED ELECTRONICS (S) PTE LTD